



# **FCEC Partners Meeting Palos Verdes Shelf Superfund Site**

8 April 2015

9:30 AM – 12:30 PM



# Agenda

- Welcome – Phillip Ramsey, USEPA
- Palos Verde Shelf Superfund Site Update
- Angler Outreach Updates
- Community Outreach Update
- Enforcement Update
- Open Forum



# PV Shelf Site Location





# OEHHA Fish Advisory Areas

Map of yellow and red zones for fish caught from Ventura Harbor to San Mateo Point





# Interim Record of Decision Remedy Components

- Hot spot capping
- Monitoring natural recovery
- Continue and strengthen existing institutional control program

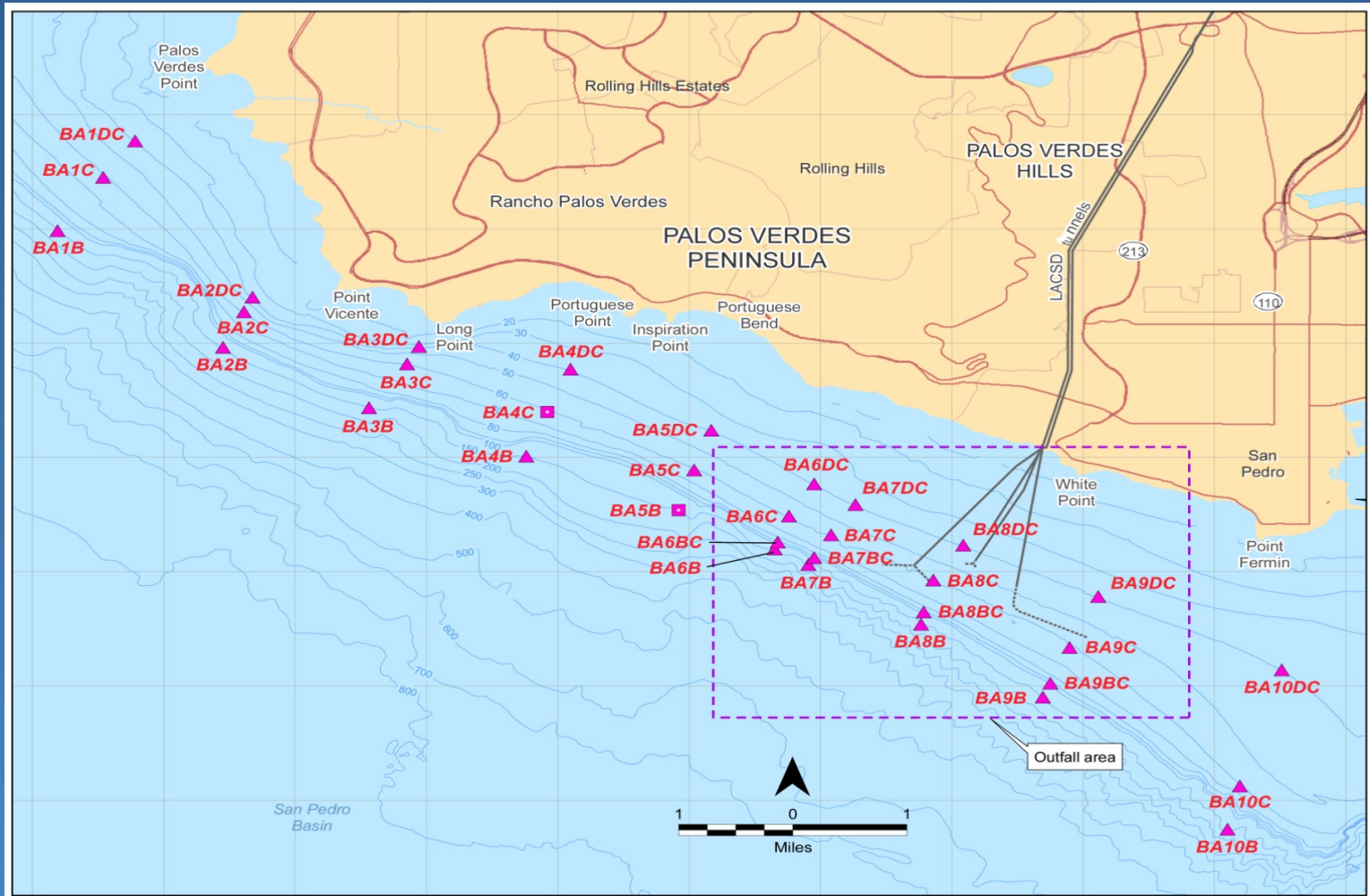


# Institutional Control Components

- Public Outreach and Education:
- Enforcement
- Monitoring
- Strategic Planning

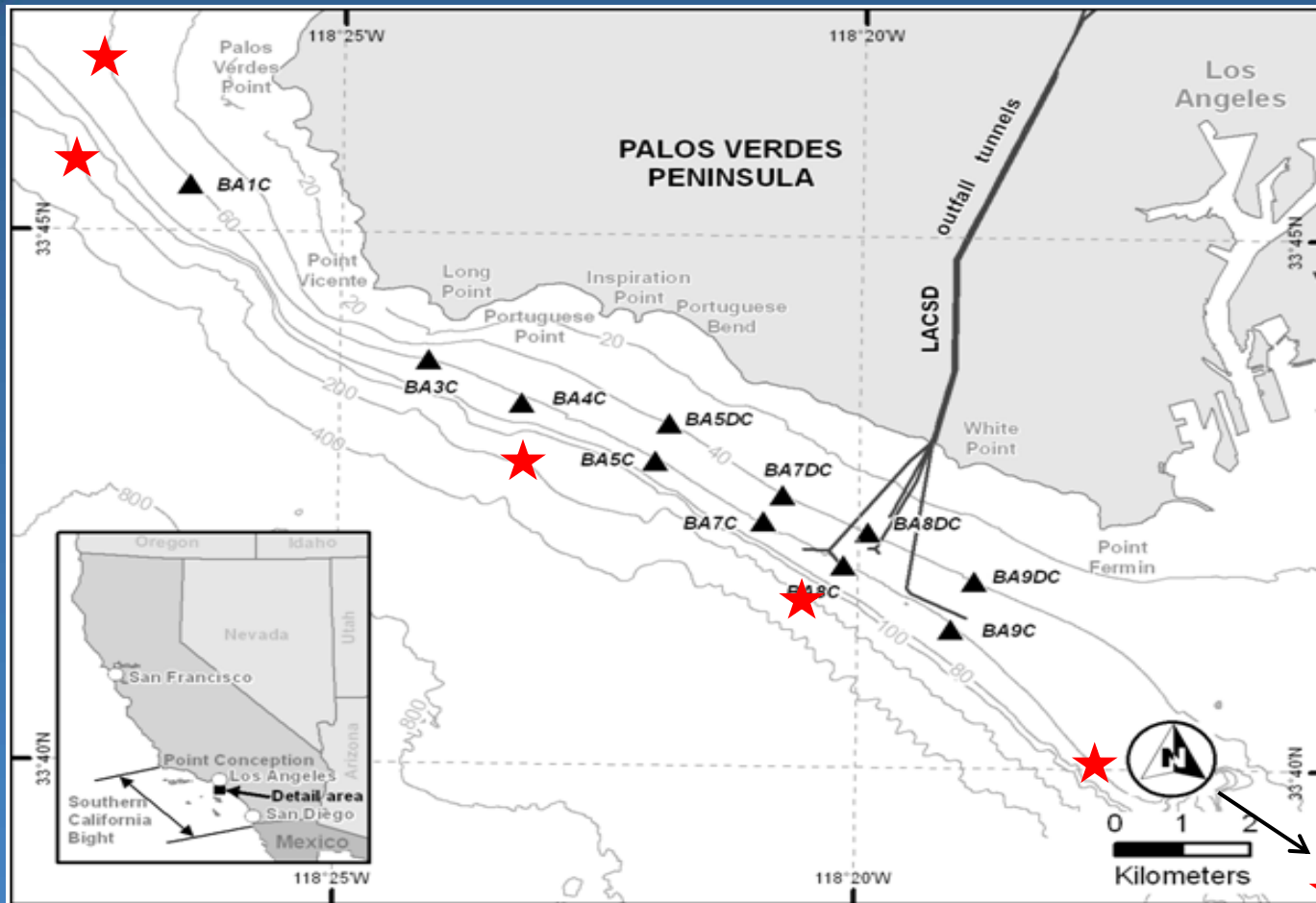


# Sediment Sampling Locations





# Water Column Passive and High Resolution Sampling Location



★ Stations outside of the Palos Verdes Shelf Study Area





# Fish Sampling Locations

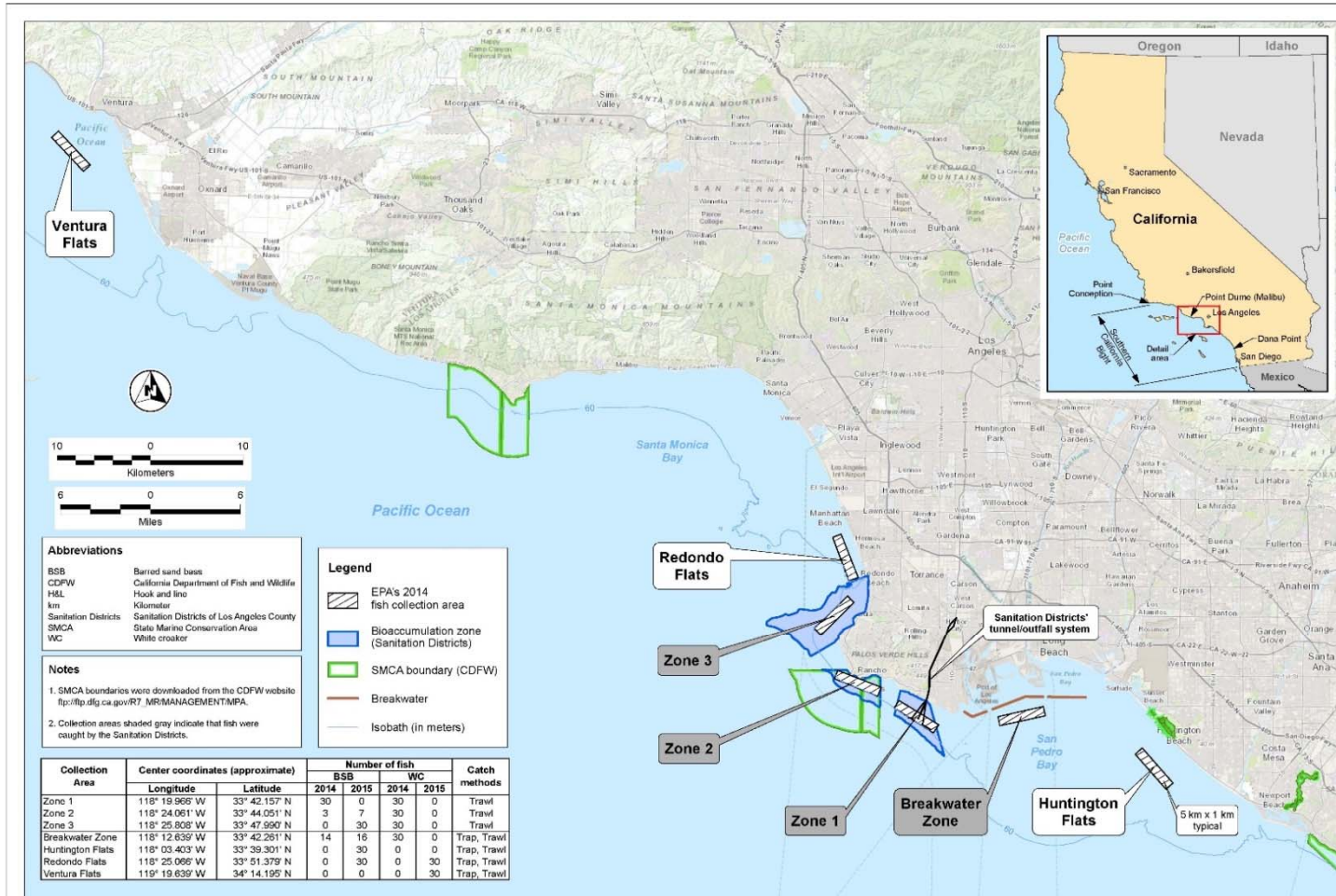


FIGURE 1  
Planned Fish Collection Areas

Fishing Sampling Program 2014-2015  
Palos Verdes Shelf  
Los Angeles County, California



G:\work\BIR\Palos\_Verdes\_Shelf\FW\CDPW\CDPW\CDPW\_Sampling\_Prog\2014\Planned\_Fishing\_Zones.mxd 3/9/2015 SANDERSON Gibbani



# Sampling Program Schedule

- Sediment
  - Collection: Completed Fall 2013
  - Analysis: Restart on April 2015
- Water Column Sample Collection
  - Passive sampling
    - Collection: Completed Fall 2013
    - Analysis: Complete by April 2015
- High Resolution Pilot:
  - Collection: Spring 2015
  - Analysis: Summer 2015



## Sampling Program Schedule (cont.)

- Fish Tissue Sample Collection
  - Collection:
    - White Croaker:
      - Three LA County Sanitation District (LACSD) Zones and Breakwater Zone: Completed October 2014
      - Spawning and Reference Locations: Spring 2015
    - Barred Sand Bass:
      - Three LACSD Zones and Breakwater Zone: On going
      - Spawning and Reference Locations: April-May 2015
- Analysis: Pending EPA Reporting Limit Determination
- Draft Monitored Natural Recovery Report (All Media) :  
Fall 2016



# EPA Partners

- Fish Contamination Education Collaborative (FCEC) General Partners:
  - National Oceanic and Atmospheric Administration (NOAA): Montrose Settlement Restoration Program (MSRP)
  - US Fish and Wildlife Service
  - California Department of Toxic Substance Control (MSCA)
  - California Department of Health Services
  - Los Angeles Regional Water Quality Control Board
  - Santa Monica Bay Restoration Commission
- FCEC Outreach Partners:
  - California Department of Fish and Wildlife (grantee)
  - Los Angeles County Toxics and Epidemiology (grantee)
  - Heal the Bay (subcontractor)
  - Cabrillo Marine Aquarium (subcontractor)
  - Boat People SOS (subcontractor): Vietnamese community in Orange County
  - Herald Community Center (subcontractor): Chinese community in LA County
- FCEC Enforcement Partners:
  - Los Angeles County Department of Public Health (grantee)
  - Orange County Health Care Agency (grantee)
  - City of Long Beach (grantee)



# Water Samplers



Copper Tubes



Passive Bag Samplers



# Water Column Grab Sampler





# Night Trawl Pictures





# Agenda

- Welcome – Phillip Ramsey, USEPA
- Palos Verde Shelf Superfund Site Update
- Angler Outreach Updates
- Community Outreach Update
- Enforcement Update
- Open Forum





# Contact Information

Phillip Ramsey

EPA project manager (IC)

[ramsey.phillip@epa.gov](mailto:ramsey.phillip@epa.gov)

(415) 972-3006

Carlin Hafiz

EPA CIC

[hafiz.carlin@epa.gov](mailto:hafiz.carlin@epa.gov)

(213) 244-1814

Judy Huang

EPA project manager (off-shore sediment)

[huang.judy@epa.gov](mailto:huang.judy@epa.gov)

(415) 972-3681