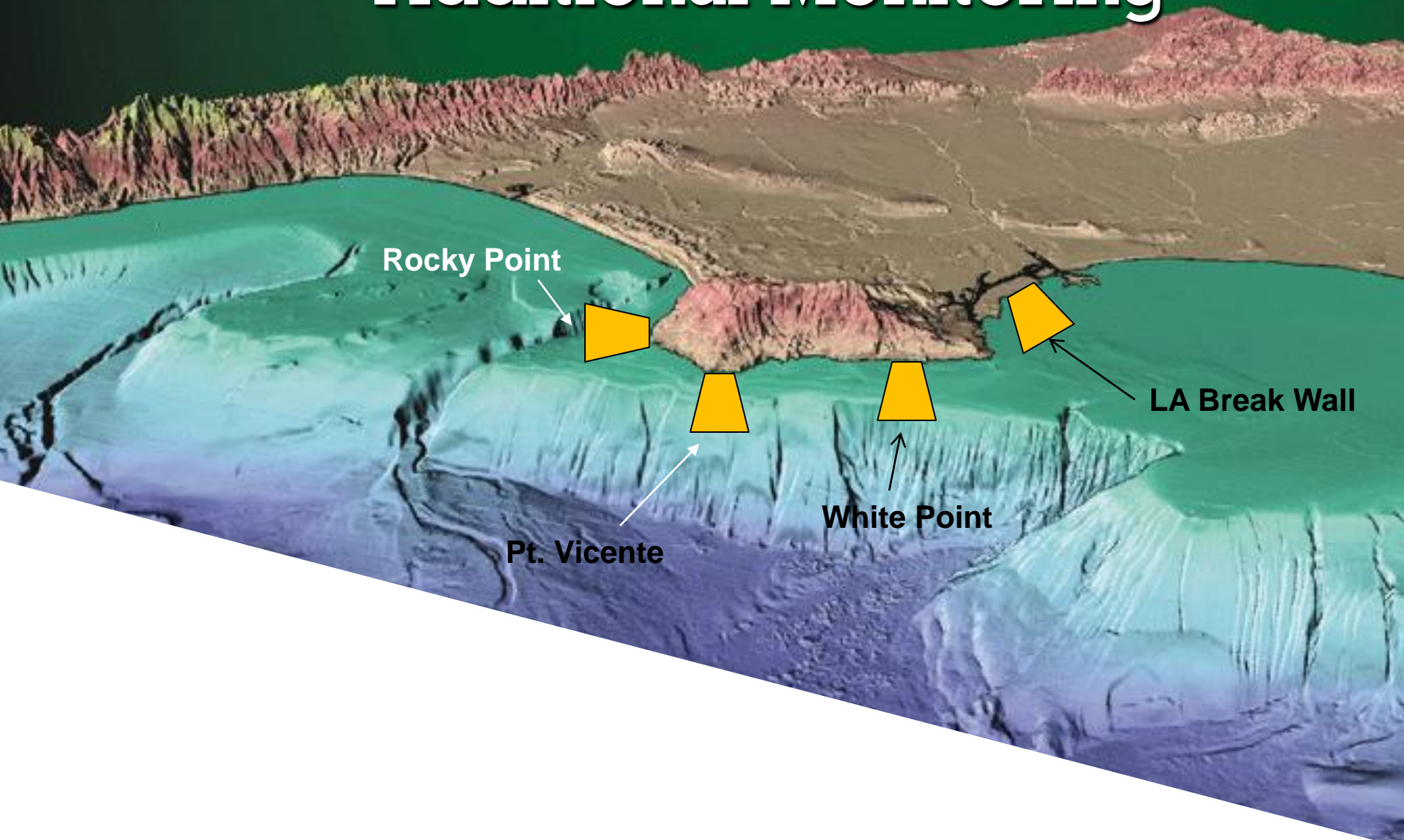




Enforcement & Monitoring Program Update

Partners Meeting
January 31, 2011

Palos Verdes Shelf – Additional Monitoring





Enforcement & Monitoring Update: May - Present

CDFG

- Inspection Surveys:
 - Commercial: 14
 - Recreational: 90
- Joint inspections:
 - 1 round with each health department
- White croaker: 0





Enforcement & Monitoring Update: May - Present



LA County

- 31 Markets Twice a Year
- Inspection Surveys: 52
- White croaker: collected from 3 markets
 - Total White Croaker collected = 15



Enforcement & Monitoring Update: May - Present



Orange County

- 12 Markets Monthly
- Inspection Surveys: 96
- White Croaker: 0
- Additional Efforts:
 - Provided 9 brochures & posters
 - Created 50 info packets (distributed half)
 - Reaching out to public health nurses & maybe clinics



Enforcement & Monitoring Update: May - Present

City of Long Beach

- 15 Markets Three Times and 2 Wholesalers
- Inspection Surveys: 50
- White Croaker: 0
- Challenges:
 - Surveys don't reflect new tip card information
 - Markets seeing fish being sold from trucks in alleys

