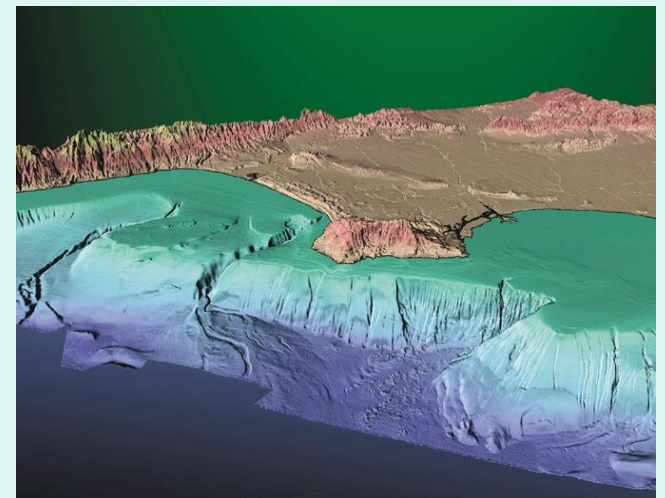


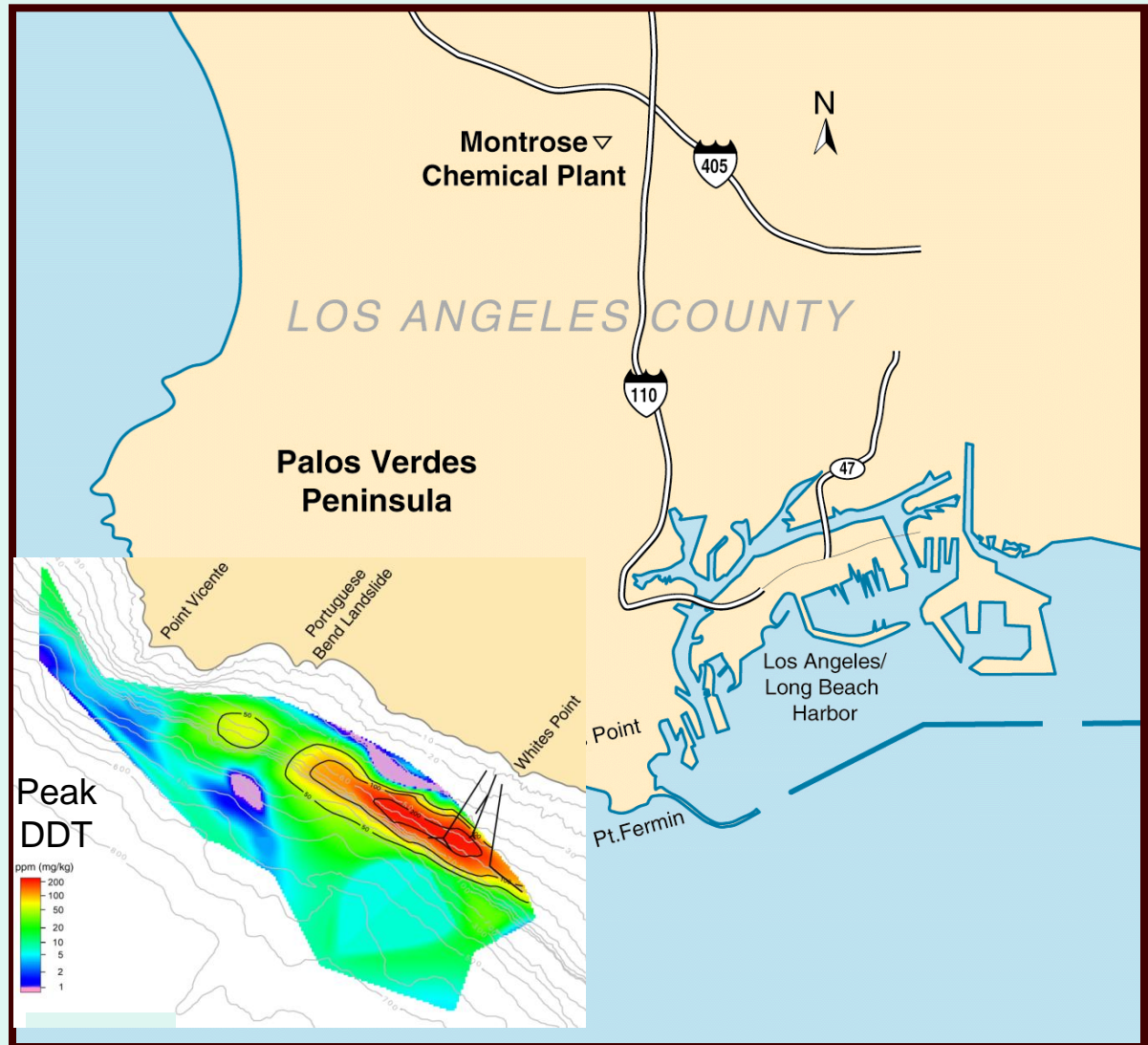
# Palos Verdes Shelf Remediation Update

September 30, 2010



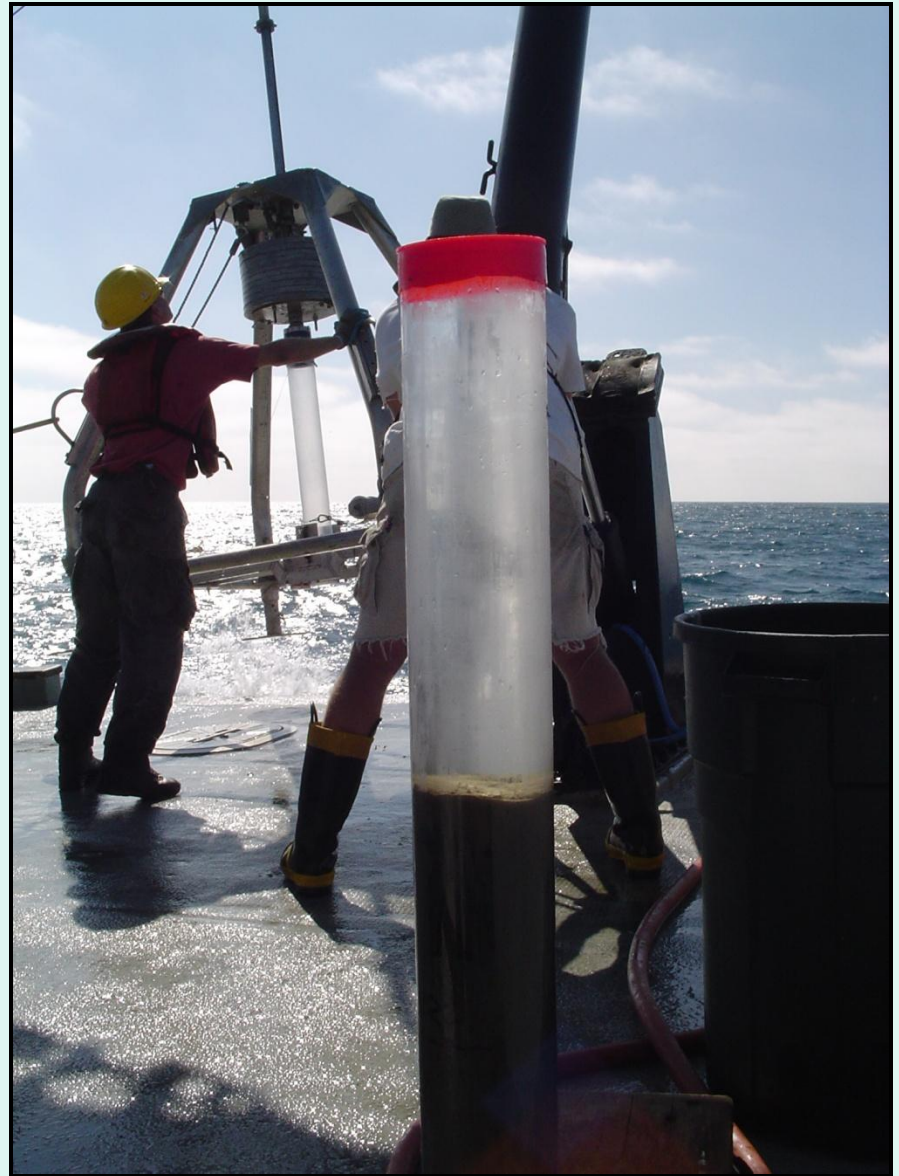
# Record of Decision signed 9/30/09

- Maintain ICs program
- Cap area around outfalls
- Monitor natural recovery
- Assess at 2<sup>nd</sup> Five-Year Review whether additional actions warranted



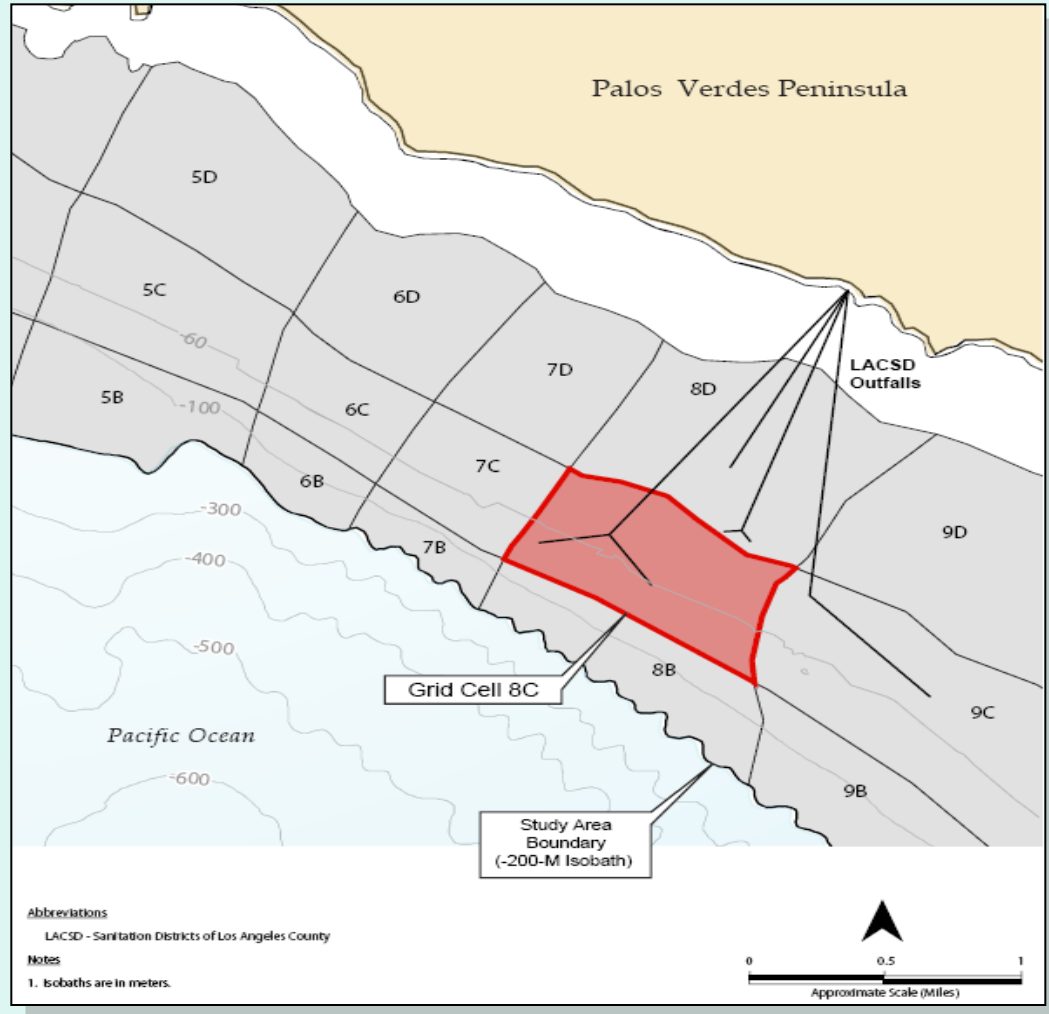
# Monitored Natural Recovery

- Reduction of DDTs & PCBs in sediment
- Reductive Dechlorination of DDE
- Modelling of sediment transport



# Proposed Cap Area

- **Capping:**  
sealing  
sediment with  
a thick layer of  
silt and sand

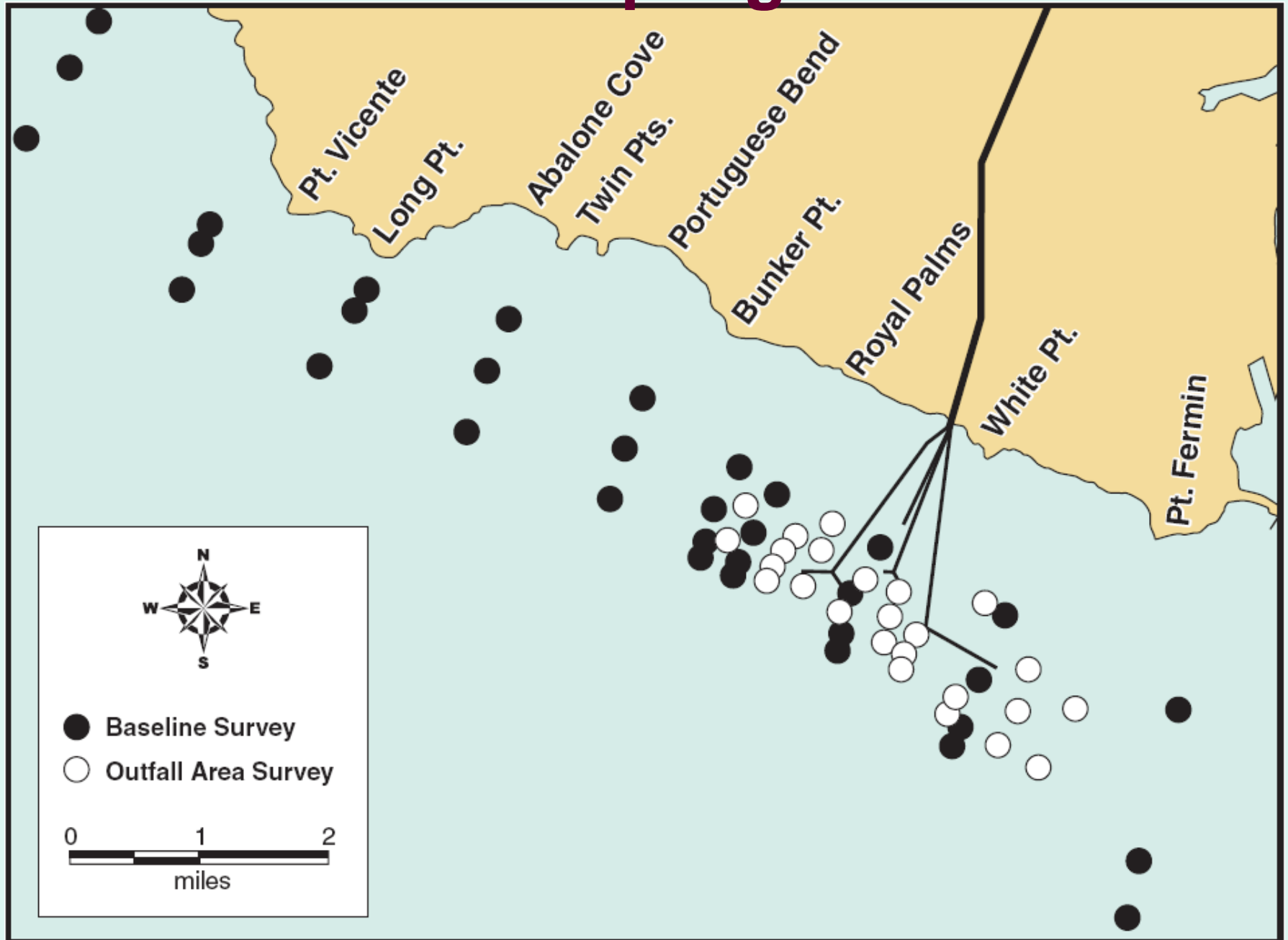


# Baseline Monitoring

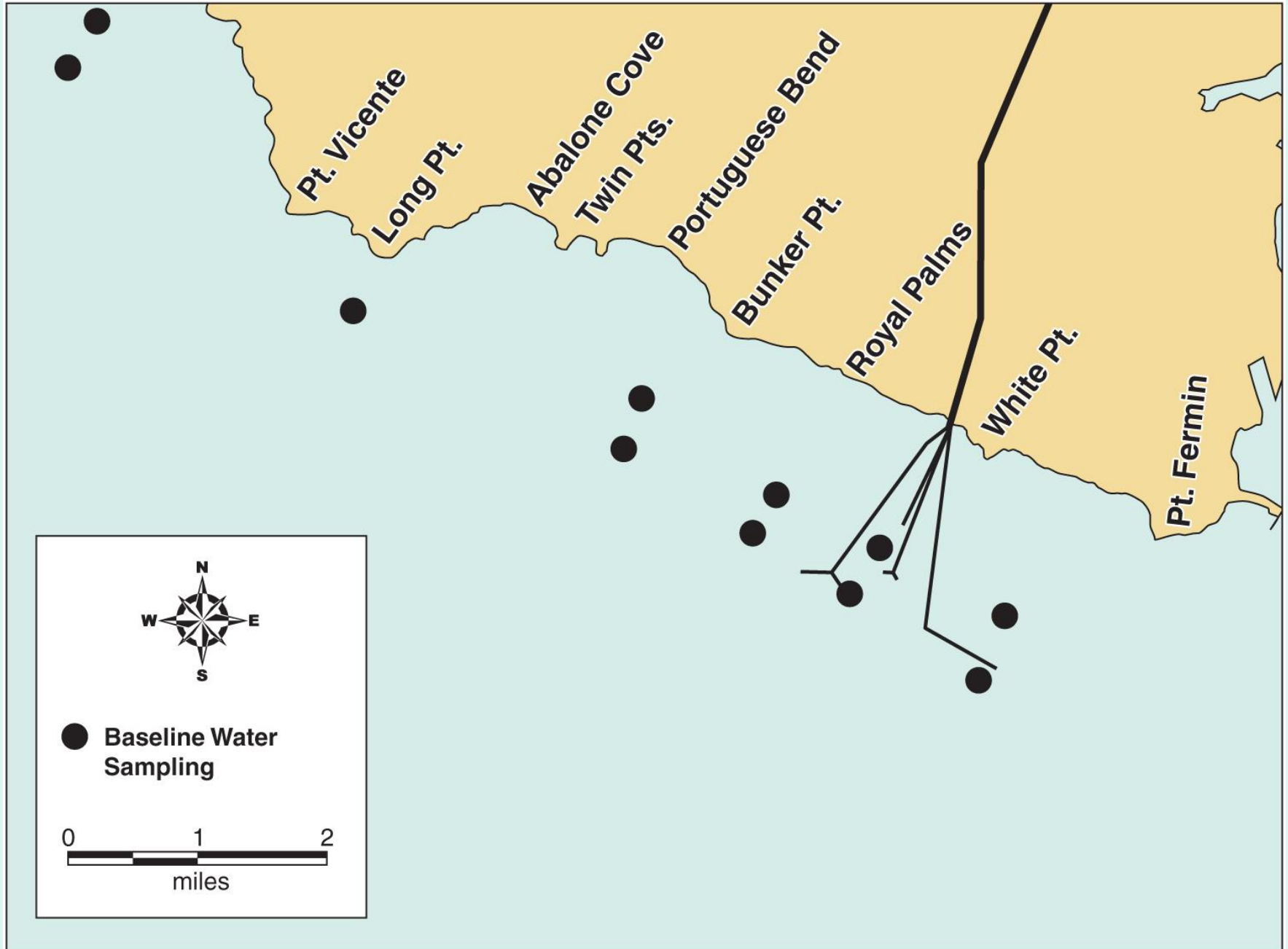
- Sediment sampling
- Water column sampling
- Fish tracking study
- Seafood consumption survey



# Sediment Sampling Locations



# Water Sampling Locations



# Fish Monitoring



EPA receiver array

Palos  
Verdes  
Peninsula

Long  
Beach

Seal  
Beach

75 WC  
25 BSB

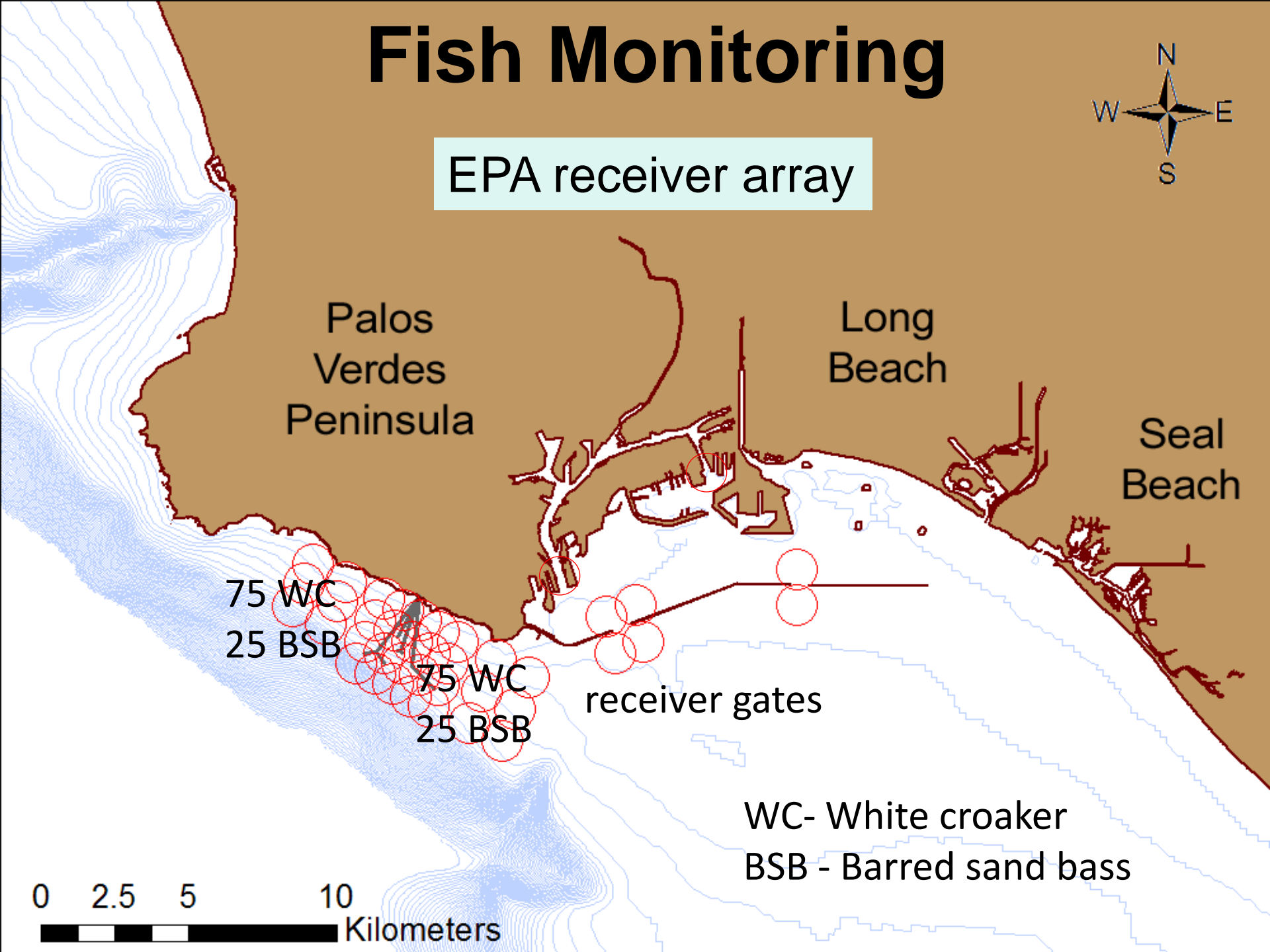
75 WC  
25 BSB

receiver gates

WC- White croaker

BSB - Barred sand bass

0 2.5 5 10  
Kilometers





# Schedule

2011 Remedial design and studies

2012 Capping

2013 Post-cap monitoring,  
assessment of effectiveness